

**DIRECTIONS FOR USE**

Add a small quantity of water to a suitable compression sprayer and then add product according to the table below. Add the remainder of the water, close the sprayer securely, shake to mix contents. Pressurise according to the sprayer manufacturer's instructions. One litre of ready-for-use spray treats 20 square metres of surface. Make up spray as required. Do not store spray overnight.

TARGET PEST	PRODUCT	WATER	COMMENTS
<b>CRAWLING INSECTS</b> Routine treatment: Heavy infestation:	25ml 50ml	5 litres 5 litres	Maintenance or "spot" treatment Attack or "clean-out" treatment
<b>FLYING INSECTS</b> Routine treatment:	25ml	5 litres	For the control of "resting insects"

Apply as a coarse low pressure spray. Some surfaces will absorb more spray, e.g. brickwork or concrete, whereas surfaces such as metal or plastic will allow spray to easily 'run off' significantly reducing the deposit rate of the active material on the surface. Several passes of a light spray each allowed to dry is more effective when treating non-porous surfaces.

**Bedbugs:** Apply spray to harbourages and resting places on bedframes, headboards and to cracks and crevices around or near the sleeping area. Pay special attention to any loose wall coverings near the sleeping area and to cracks and crevices in bedroom fittings and furniture. Treat under loose floor coverings and around door frames, picture frames and wall cupboards etc.

**Fleas:** Prior to treatment, thoroughly vacuum the area and seal the contents of the vacuum bag before disposal in the refuse. Apply spray to carpets and soft furnishings, including the underside of cushions and to areas regularly occupied by domestic animals.

**Cockroaches and other crawling insects:** Apply to areas where insects are found, e.g. skirting boards, storage areas, around water pipes, door frames, window frames, around and behind refrigerators, cabinets, sinks, stoves and the underside of drawers and shelves and to cracks and crevices behind wall-mounted units or fixtures.

**FOR INDOOR USE ONLY.** This material and its container must be disposed of in a safe way. To avoid risks to human health and the environment, comply with the instructions for use. Avoid excessive contamination of coveralls. Contaminated clothing should not be removed from the workplace and should be washed before re-use. WASH HANDS AND EXPOSED SKIN before meals and after use. FACIAL SKIN CONTACT MAY CAUSE TEMPORARY NUMBNESS. DO NOT SPRAY DIRECTLY ONTO HUMANS, PETS, FOOD, FOOD PREPARATION SURFACES OR FOOD UTENSILS. ADDITIONALLY, ANY FOOD UTENSILS OR FOOD PREPARATION SURFACES SHOULD BE THOROUGHLY CLEANED BEFORE REUSE. UNPROTECTED PERSONS AND ANIMALS SHOULD BE KEPT AWAY FROM TREATED AREAS UNTIL SURFACES ARE DRY. EXCLUDE ANIMALS DURING APPLICATION. DO NOT APPLY TO CLOTHING OR HUMAN BEDDING. DO NOT TOUCH TREATED SURFACES UNTIL DRY. HAZARDOUS TO BEES. KEEP IN A SAFE PLACE. COVER ALL WATER STORAGE TANKS before application. REMOVE OR COVER FISH TANKS AND BOWLS before application. SPRAY ONLY ONTO SURFACES.

NEW ZEALAND 24 HOUR EMERGENCY CONTACT NUMBER: + 64 21 670 105

THIS SUBSTANCE MUST ONLY BE SUPPLIED TO A WORKPLACE UNDER THE MANAGEMENT AND CONTROL OF A PCB, OR TO A PROFESSIONAL PEST CONTROL OPERATOR.

Approved pursuant to the HSNO Act 1996  
No: HSR101412  
Substance PG0001  
Hazard Classifications:-  
6.1D (oral), 6.3B, 6.4A, 6.5B, 6.8B, 6.9A (oral),  
6.9B (inhalation), 9.1A, 9.3B, 9.4A  
See www.epa.govt.nz for approval conditions.

**DANGER****PRECAUTIONS**

Do not breathe vapour/spray. Wash contaminated skin thoroughly after handling. Do not eat, drink or smoke when using this product. Avoid release to the environment. **IF SWALLOWED:** Call a POISON CENTER 0800 POISON (0800 764 766) or a doctor if you feel unwell and rinse mouth. **IF INHALED:** Remove person to fresh air and keep comfortable for breathing. Get medical advice/attention if you feel unwell or are concerned. **IF ON SKIN:** Wash with plenty of soap and water. If irritation or rash occurs, seek medical attention/advice. Collect spillage. Store in a well-ventilated place. Keep container tightly closed. Store locked up. Dispose of contents/container in accordance with national and regional regulations. This may be via approved landfill. Harmful if swallowed or inhaled. May cause an allergic skin reaction. Causes damage to organs through prolonged or repeated exposure. Very toxic to aquatic life with long lasting effects. Suspected human or known or presumed animal reproductive or developmental toxicant. Very toxic to terrestrial vertebrates. Very toxic to terrestrial invertebrates. Causes mild skin irritation. Causes serious eye irritation. Wear eye/face protection and protective gloves. Obtain special instruction prior to use. Do not handle until all safety precautions have been read and understood. **IF ON EYES:** rinse cautiously with water for several minutes, removing contact lenses if they are present and it is easy to do so.

**KEEP OUT OF REACH OF CHILDREN**

International  
INSECTICIDE

# CIMETROL SUPER EW

Advanced formulation for the control of bedbugs, fleas, cockroaches, beetles, (and their larvae), flies, mosquitoes, moths (and their larvae), and wasps.

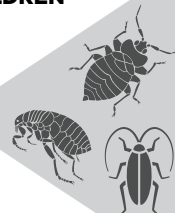
FORMULATED FOR TOTAL PEST CONTROL

For indoor use only for all domestic, commercial and industrial premises including kitchens, hotels, dormitories and sleeping areas, hospitals (excluding occupied wards), military establishments, cruise ships and food storage/processing areas.

Contains

25% w/w cypermethrin  
10% w/w tetramethrin  
20% w/w piperonyl butoxide  
1% w/w pyriproxyfen

500ml



Manufactured in the UK by  
PelGar International Limited  
Unit 13, Newman Lane,  
Alton, Hampshire, GU34 2QR  
United Kingdom  
Ph: + 44 1420 80744  
www.pelgar.co.uk

Distributed in NZ by  
PelGar International (NZ) Limited  
PO Box 11825, Ellerslie  
Auckland 1542  
Ph: +64 21 670 105

